

# Eye Makeover

Here's a Photoshop Tutorial to drastically enhance the overall look of any portrait, simply by applying a few effects to the eyes.

First off, open your image in Photoshop. This tutorial uses Photoshop CS2, but it works equally well with Photoshop 7, Photoshop CS, or Photoshop CS3.



I will be using this image

## Step 1: Cleaning up the Whites

The first step is to use Photoshop to clean up the white parts a bit. You can use Photoshop's Healing Brush tool, but I find it more effective to just get rid of the problem altogether. To do this, first duplicate the background layer. With the duplicate background layer selected, go to Photoshop->Image->Apply Image on the Photoshop menu. On the dialog box that appears, set the channel to "Red" and the blending mode to "normal." Then click ok.



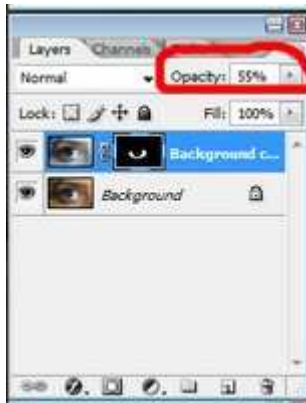
Once Photoshop has made the adjustments, add a layer mask to the duplicated background layer. (Click the button on the bottom of the layers palette that looks like a white circle on a dark rectangle.)



With the layer mask selected, press control+i to invert the layer mask. Now switch to the Brush Tool on the Photoshop tool bar and make white your foreground color. Simply paint over the whites of the eyes and watch Photoshop make the bad bits disappear. If you make a mistake, simply change your foreground color to black and paint over the mistake to undo it. Continue painting until the whole white area is clean.



We don't want the effect to look fakey or plasticity, so you need to lower the layer's opacity a bit. To do this, simply change the opacity on the top of the Photoshop Layers palette to something closer to 55 percent.



The portrait is improving already.

### Step 3: Brighten with Curves Layer

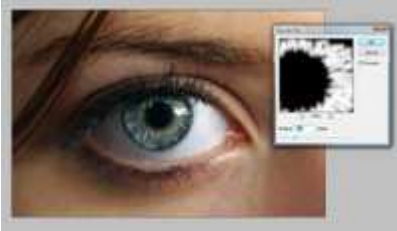
Now that we have enhanced the whites, we need to get started on the iris. First, add a new curves layer. (Go to Photoshop ->Layer->New Adjustment Layer->Curves) Set it's blending mode to Linear Dodge. Finally, with the layer mask selected, press contro+i (command+i) to invert the Photoshop Layer mask.



Now select the Photoshop Brush tool from the Photoshop Tool bar. With white as your foreground color, make your diameter small, just a dot. Set your brush hardness to 100%, and begin "etching" some brightness into the irises, starting at the pupil and etching outwards towards the whites. Be sure to stay within the iris. If you make a mistake, change your foreground color to black and erase the error. You should get a picture something like this (click to enlarge):



Now we need to make the effect more realistic. Photoshop has a lot of blur filters, but we'll use the Gaussian Blur tool. When you're happy with your etching, go to Photoshop ->Filter->Blur->Gaussian Blur. Set the blur amount to somewhere between 2 and 6 pixels. The goal is to have Photoshop blur the etches just enough to make them less "rigid" looking, but still maintain some of their shape. I used 3.8 for mine



Finally, reduce the opacity of the curves layer to make the overall effect less harsh.

Step 4: Add a Photoshop Curves layer to further enhance the effect

Now we need to put a darker ring around the iris. Add another Photoshop Curves Layer and set it's blending mode to "linear burn." Invert the layer mask (control+i).



Select the Photoshop Brush tool and set it's diameter to just big enough to make a small border around the iris. With white as the foreground color, paint a border around the colored iris.



Again apply a Photoshop Gaussian Blur. (Go to Photoshop ->Filter->Blur->Gaussian Blur) Use a fairly high setting, enough to turn the solid line into more of a shadow.



Reduce the opacity of this Photoshop Curves Layer to somewhere along 75%, or until a natural look is achieved. Once you're happy with the look, you're finished! That's the end of this Photoshop tutorial! Here are my before and after pictures



After a little more tweaking and editing in Photoshop, I came up with a final product like this



So there you have it, a very much enhanced picture using Photoshop.